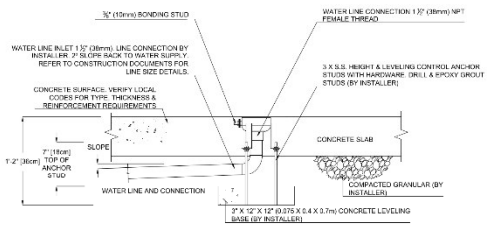


APPENDIX 4

Existing Features at Town of The Pas Spray Park

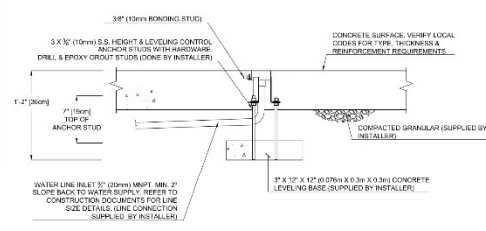
COPYRIGHT VORTEX AQUATIC STRUCTURES INTERNATIONAL. THIS DOCUMENT AND THE IDEAS, APPROACHES AND OTHER CONTENTS CONTAINED THEREIN ARE THE SOLE PROPERTY OF VORTEX AQUATIC STRUCTURES INTERNATIONAL. THE USE OF THIS DOCUMENT, CONTENTS OR INFORMATION FOR ANY PURPOSES OTHER THAN THAT FOR WHICH IT WAS SPECIFICALLY PREPARED IS STRICTLY PROHIBITED. CONTACT VORTEX AQUATIC STRUCTURES INTERNATIONAL FOR MORE INFORMATION.
 CE DOCUMENT EST EN TOUT TEMPS LA PROPRIETE DE VORTEX AQUATIC STRUCTURES INTERNATIONAL INC. ET LE PRESENT EST UN UTILISE DE REPRODUCTION EN CONVIENANCE POUR LE SEUL BUT POUR LEQUEL IL A ETÉ PREPARE.

FRONT ELEVATION VIEW



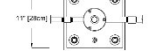
1 Ground Feature Anchor Typ. 1 1/2"
 C-001

FRONT ELEVATION VIEW

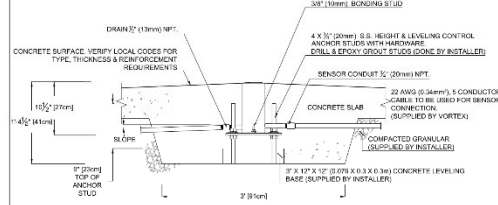


2 Ground feature Anchor typ. 3/4"
 C-001

PLAN VIEW

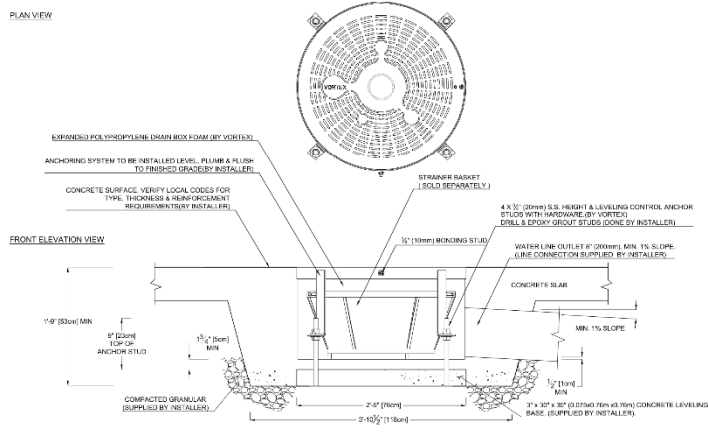


FRONT ELEVATION VIEW



3 Foot Activator
 C-001
 VOR-606.0000

PLAN VIEW



4 Playsafe Drain No.1
 C-001
 VOR-1001.4000

The Pas SP

Project Location		Town of The Pas, MB	
Project Number		30907	
Order Number			
Date			
Drawing Title		Embed Details	
Drawn by	Verified by		
B.T.	HAB		
Scale	Date		
N.T.S.	19/Sept/2018		
Page #	C-001		

